

# TRUCK, UTILITY, 1/4 TON AND 3/4 TON, GS, LANDROVER

## RADIATOR GRILLE

### MODIFICATION INSTRUCTION

REFERENCE: - AC in WM Nos 22227/25, 22228/20, 23614/1, 23850/1.

#### SUMMARY

1. This instruction details the alterations to the radiator grille to permit the grille to be hinged forward when it is blanked off with wading fabric for deep fording waterproofing.

Estimated manhours to perform: 0.5

2. Priority: Group 2

3. Vehicles affected:

Subject vehicles.

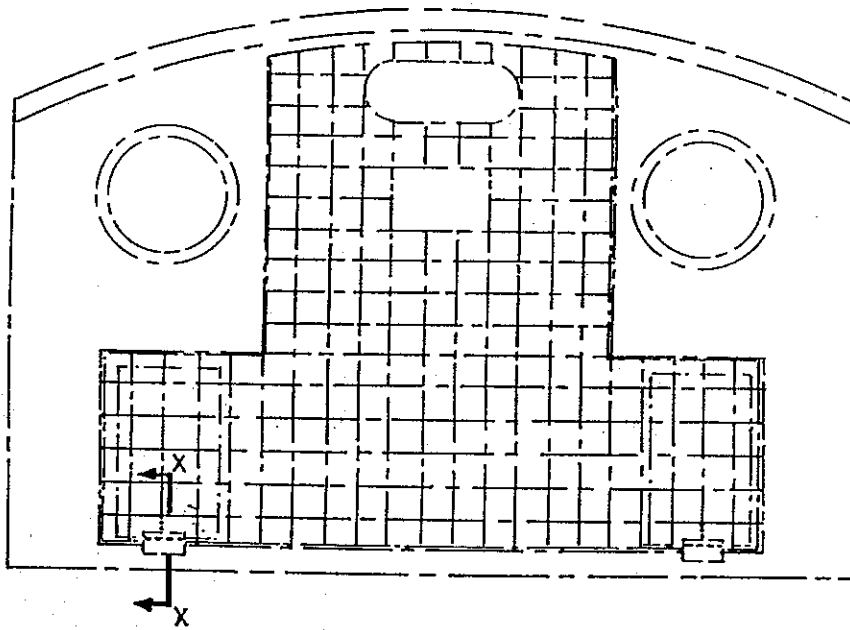
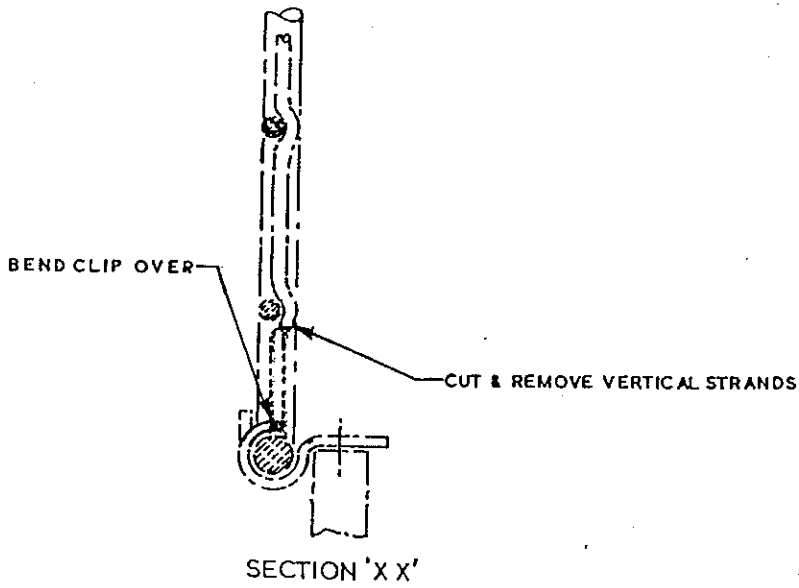
4. Items affected:

Radiator grille

5. Action required: By RAEME workshops authorised to carry out field repair or work in accordance with WKSP A 850.

#### DETAIL

6. (a) Where the radiator grille fits into the cleats on the radiator grille panel, mark the vertical wires which form the mesh and arc in the centre of the cleats.
- (b) Remove the grille from the vehicle and cut the marked wires level with the first horizontal wire of the mesh, fig 1.
- (c) Fit the grille into the cleats and bend the cleat lips back over the grille wire edging to form a hinge.
- (d) Resecure the grille to the radiator grille panel.



NEW WORK IS IN FULL LINE  
EXISTING PARTS IN CHAIN LINE

FIG 1 - CLEAT HINGE DETAIL

E N D